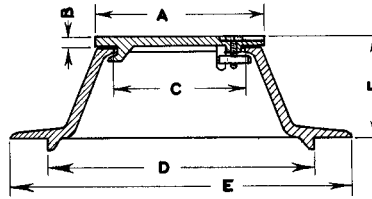


R-1914 Series Water Meter Frame, Solid Lid

Light Duty

Note locked cover.



Dimensions in inches

Catalog No.	A	B	C	D	E	F
R-1914-A	12	1/2	11	14 1/2	20	4
R-1914-B	12	1/2	11	17 1/2	20	4

R-1915 Series Watertight Manhole Frame, Bolted Lid

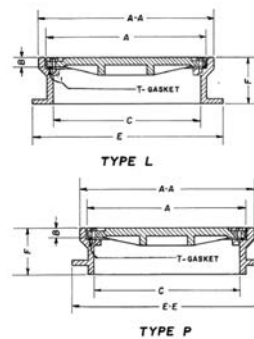
Heavy Duty

Suitable for watertight, low pressure gas or steamtight application up to 20 psi. For higher pressure application, please send specifications. Bearing surfaces are sealed with a gasket. Countersunk stainless steel hexagonal-head cap screws fasten lid to frame, making seal. Lids are furnished with concealed pickhole, Type "F" design (see p. 16). Anchor holes furnished only when specified. Anchor bolts not furnished.

Note: Bolting pads reduce effective clear opening (dimension C) by 2" to 3".

If "C" dimension is critical, select larger size.

Units are shipped assembled with gasket glued to frame.



Dimensions in inches

Catalog No.	Frame Type	A	AA	B	C	E/EE	F	Cover Bolt Quantity
R-1915-E	Type L	25 1/4	27	1	22	28 1/2	6	4
R-1915-E2	Type P	25 1/4	27	1	22	28 1/2	6	4
R-1915-G	Type L	25 3/4	28	1 1/2	23 1/8	36	7 1/2	4
R-1915-G2	Type P	25 3/4	28	1 1/2	23 1/8	30 3/4	7 1/2	4
R-1915-H	Type L	25 3/4	27 3/4	1	23 1/4	32	8	4
R-1915-H2	Type P	25 3/4	27 3/4	1	23 1/4	30 3/4	8	4
R-1915-J	Type L	29	31	1 3/4	27	35	6	6
R-1915-J2	Type P	29	31	1 3/4	27	34	6	6

R-1915-S1 Watertight Manhole Frame, Gasket, Bolted Lid

Heavy Duty

Units are shipped assembled with gasket glued to frame.

Note: Bolting pads reduce effective clear opening (dimension C) by 2" to 3".

